

National Travel Health Network and Centre

Annual Report 2012-2013



OVERVIEW **3**

Directors' Statement

GOVERNANCE **4**

NaTHNaC Steering Committee

NaTHNaC Senior Management Team (SMT)

NaTHNaC Team

FINANCIAL REVIEW **8**

NaTHNaC Financial Report 2012 - 2013

OPERATIONS **11**

Key Service Areas

Core Objectives

Team Achievements for 2012 - 2013:

Operational Highlights from 2012 - 2013

OVERVIEW

Directors' Statement




In 2012, NaTHNaC celebrated its 10th anniversary by welcoming both of us as new directors. We are delighted to have this opportunity, and aim to build upon the national and international reputation built by our predecessor, Professor David Hill, and lead the organisation successfully through its next decade.

When we started, we took some time to review the service, its objectives and accomplishments to date. Faced with some significant financial challenges, recruitment to vacant positions, as well as investment in certain projects such as the re-development of the NaTHNaC website, had to be put on hold. Important internal changes have now been made to strengthen the governance of the organisation, reduce expenditure, and work more efficiently. We are now well placed to move forward with confidence. We would like to thank our commissioners Public Health England (and its predecessor, the Health Protection Agency), University College Hospital NHS Trust, and members of the NaTHNaC Steering Committee for all their support, and each member of the NaTHNaC team for the commitment and dedication they have shown through these times of change.

Our aspiration is to lead the way in travel health. We want to be recognised as an authoritative voice and centre of excellence in this speciality, be known for our partnerships and collaborations, and be admired for our innovations and growth. Central to achieving this is a willing, able and talented team committed to delivering quality services, which provide value for money, yet meet the needs of our users. We will promote a culture of openness, integrity and professionalism, and create a great place to work. Our work over the last year will allow us to achieve this. We now have a robust business plan in place, which will ensure our growth in the years to come, and we are now in a position to expand our team, improve our existing services, and launch some exciting new ones.

Looking ahead we want to do more to understand and respond to the needs of our audience. We will produce new guidance, educational packages, and support frameworks for all health professionals delivering travel services in the UK. We will target key messages, and actively seek opportunities for collaborations, to extend our reach to the British traveller, and to strengthen our national and international partnerships.

A handwritten signature in blue ink, appearing to read 'V. Field Dipti Patel'.

Vanessa Field and Dipti Patel

GOVERNANCE

NaTHNaC was created by the Department of Health in 2002. We are now commissioned by Public Health England (PHE) and work in partnership with our network founders:

- PHE
- The Hospital for Tropical Diseases
- Liverpool School of Tropical Medicine
- London School of Hygiene and Tropical Medicine
- University College London Hospital (UCLH) NHS Foundation Trust

NaTHNaC's broad aim is to protect the health of the British traveller, and it does this by providing evidence-based advice, information, and training to health professionals, travellers, the travel industry, and to national government.

NaTHNaC Steering Committee

The NaTHNaC Steering Committee has representation from each of the NaTHNaC partners plus PHE, UCLH NHS Foundation Trust and the Department of Health. NaTHNaC is grateful for the support of each member organisation.

Steering Committee members:

- Dr Nick Beeching Liverpool School of Tropical Medicine (Chair)
- Dr Ron Behrens Hospital for Tropical Diseases
- Dr Graham Bickler PHE
- Dr Michael Brown London School of Hygiene and Tropical Medicine
- Dr Vanessa Field NaTHNaC
- Dr Vanya Gant University College London Hospitals NHS Foundation Trust
- Dr Jane Jones PHE, Travel and Migrant Health Section
- Prof David Laloo Liverpool School of Tropical Medicine
- Dr Ruth Parry (ex officio) Department of Health
- Dr Dipti Patel NaTHNaC
- Mr Robert Sokoo PHE
- Ms Melanie Watts University College London Hospitals NHS Foundation Trust
- Mr John de Vial ABTA (observer November 2012 onwards)

NaTHNaC Senior Management Team (SMT)

The current NaTHNaC SMT was established by the new directors in June 2012.

The NaTHNaC SMT consists of the directors, business manager, service manager, senior nurse, and clinical adviser. It is chaired by the directors and meets on a monthly basis. The SMT is responsible for the strategic and operational management of NaTHNaC and implementing any policies and strategies as agreed by the Steering Committee.

NaTHNaC Team

NaTHNaC's expertise is provided by 12 staff based in London or Liverpool. They include doctors, nurses, an information analyst, and administrators (see organogram on page 8).

| | |
|--------------------------|--|
| Terence Corrigan (TC) | Data Manager, London |
| Carolyn Driver (CD) | Specialist Nurse Adviser (Telephone Advice Line Service) |
| Dr Vanessa Field (VF) | Joint Director, London |
| Dr Lisa Ford (LF) | Clinical Adviser, Liverpool |
| Mary Gawthrop (MG) | Specialist Nurse Adviser, London |
| Yetunde Ibitoye (YI) | Yellow Fever Programme Administrator, London |
| Daiga Jermacane (DJ) | Senior Information Analyst, London |
| John Mathewson (JM) | Business Manager, London |
| Linda Pang (LP) | Administrative Assistant, London |
| Dipti Patel (DP) | Joint Director, London |
| Geraldine Oliver (GO) | Service Manager, London |
| Hilary Simons (HS) | Senior Specialist Nurse, Liverpool |
| Alexandra Stillwell (AS) | Specialist Nurse Adviser, London |
| Rose Tucker (RT) | Specialist Nurse Adviser (Telephone Advice Line Service) |
| Claire Wong (CW) | Specialist Nurse Adviser, Liverpool |

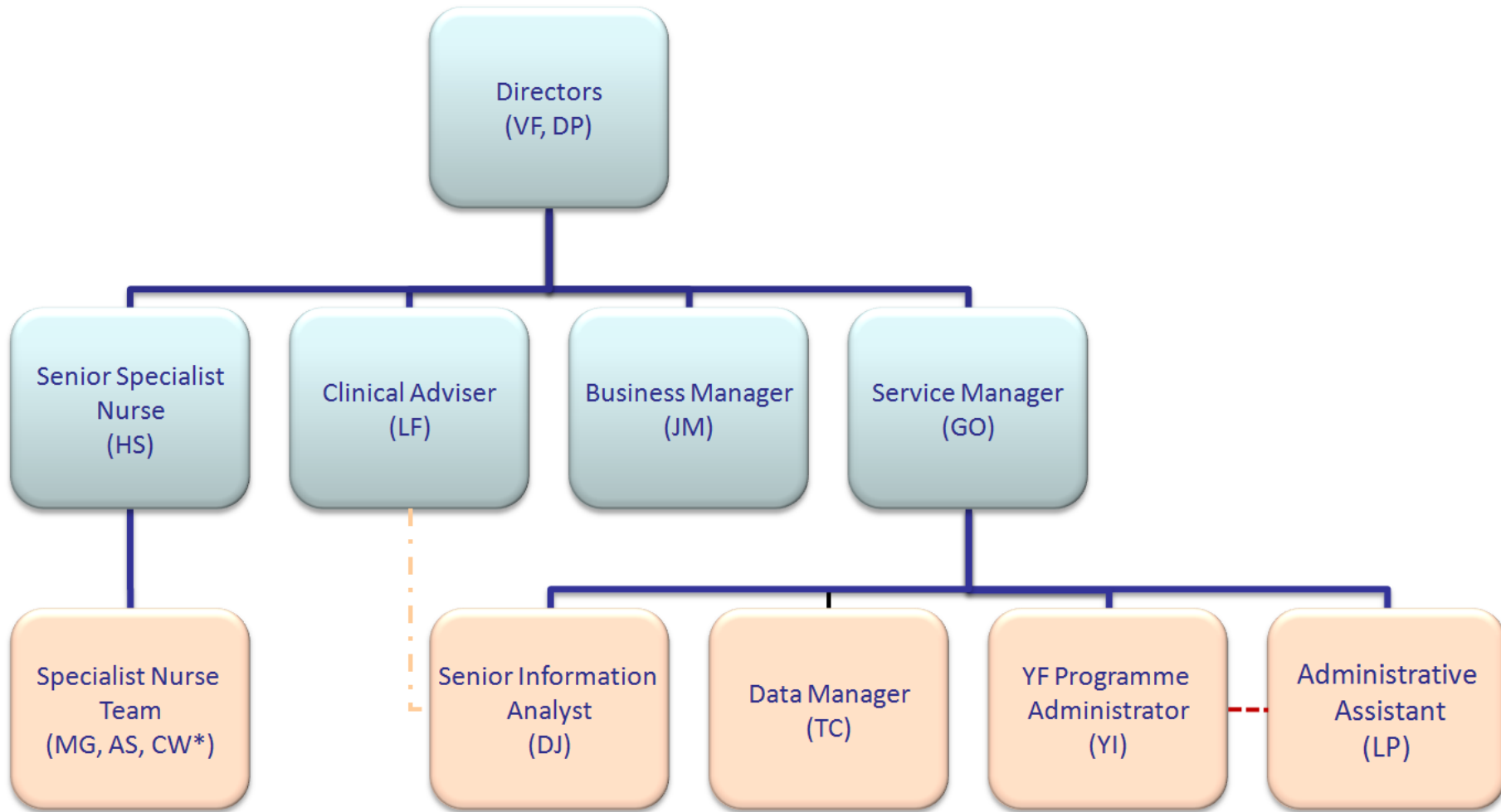
Yellow Fever Vaccination Centre Associate Trainers

This group of travel health specialists has greatly aided NaTHNaC in training individuals from the 3695 registered Yellow Fever Vaccination Centres in England, Wales and Northern Ireland.

NaTHNaC is indebted to each one of them for their help over the last year.

| | |
|-------------------|--|
| Shirley Bannatyne | Specialist Nurse in Travel Medicine, MASTA |
| Lynda Bramham | Specialist Nurse in Travel Medicine, MASTA |

| | |
|----------------|--|
| Carolyn Driver | Specialist Nurse in Travel Medicine, Cheshire |
| Norma Evans | Specialist Nurse in Travel Medicine, Warrington |
| Sandra Grieve | Specialist Nurse in Travel Medicine, Warwickshire |
| Alison Jenkins | Specialist Nurse in Travel Medicine, Kent |
| Sarah Lang | Specialist Nurse in Travel Medicine, Hertfordshire |
| | Immunisation Advisor, Thames Valley |
| Joanna Lowry | Specialist Nurse in Travel Medicine, Winchester |
| Kath Lynch | Specialist Nurse in Travel Medicine, London |
| Cate Riley | Specialist Nurse in Travel Medicine, Manchester |
| Dr Steve Riley | General Practitioner, Manchester |
| Dr Barry Walsh | Consultant in Communicable Disease Control, London |



* Left February 2013



= Senior Management Team

- - - - - = Clinical supervision

- - - - - = Day to day management

FINANCIAL REVIEW

The financial statements on pages 10 cover the period from 1 April 2012 to 31 March 2013.

NaTHNaC receives operating funds from three sources:

- **PHE**

PHE provides core funding for NaTHNaC on an annual basis, and commissions NaTHNaC to carry out its work, including its programme for Yellow Fever Vaccination Centres (YFVCs). NaTHNaC is hosted by the UCLH NHS Foundation Trust and its headquarters are at 250 Euston Road, London. All monies received from PHE are administered through the trust, and all London-based NaTHNaC personnel (with the exception of the directors) are employed by the trust. The directors are employees of PHE, and Liverpool staff are employees of Liverpool School of Tropical Medicine.

- **The Yellow fever vaccination programme**

This comprises both YFVC registration fees and training fees. Registration fees from YFVCs are assigned to the year of receipt and the subsequent year depending upon the period of registration of the individual centre (YFVCs have the option of registering for one or two years).

Yellow fever training programme fees are targeted to recover costs and may be carried over into subsequent years.

- **Other income**

The NaTHNaC online shop sells several items: the UK Yellow Book, International Certificates of Vaccination or Prophylaxis, YF Patient Information leaflets, and laminated YF vaccination maps. These contribute a small amount to the operating budget.

Expenditure is divided between the two sites where NaTHNaC operates: the UCLH NHS Foundation Trust in London and the Liverpool School of Tropical Medicine.

NaTHNaC Financial Report 2012 - 2013

| INCOME | £ | £ |
|---|--------------|-----------------|
| Brought forward from 2011 - 2012 | 0 | |
| Annual Core Funding (PHE) | 316,000 | |
| YFVC Registration Fees (2012-2013) | 134,561 | |
| Registration fees carried forward to 2013/14 | -50,000 | |
| YFVC Training Fees | 199,944 | |
| TOTAL INCOME | | 600,505 |
| EXPENDITURE | | |
| Pay | UCLH 303,519 | |
| | LSTM 130,700 | |
| | | 434,219 |
| Overheads | UCLH 41,623 | |
| | LSTM 32,675 | |
| | | 74,298 |
| YFVC Training Costs | 85,806 | |
| Rent, Rates, Utilities | 107,953 | |
| Project Work & General Expenditure | 115,745 | |
| | | 309,504 |
| TOTAL EXPENDITURE | | 818,021 |
| SURPLUS/DEFICIT | | -217,516 |

Notes/Assumptions

- *£50,000 registration fee income has been carried forward on the basis that it relates to future periods*
- *HPA funding of £437,000 was reduced to £316,00 to account for director salaries which are paid directly by PHE**
- *No income has been generated from Yellow Book sales*
- *Liverpool School of Tropical Medicine overheads are charged at 25% costs*
- *UCLH overheads are charged at 10% PHE income*
- *The general expenditure, rates, rent and utilities include some backdated prior year costs from the Stationery Office and Doctors Laboratory respectively*

The financial position at the end of 2012-2013 relates to expenditure in 2011-2012, and is complicated by the two-year cycle of income generation from the yellow fever programme (where every alternate year income is carried forward to support the forthcoming year). An internal review of accounts has indicated that the deficit in 2012-2013 relates to an overspend in 2011-2012 resulting in no income being available to carry forward from 2011-2012 to 2012-2013. Some bills were also carried forward to 2012-2013 due to non-payment in 2011-2012.

NaTHNaC has reduced this overspend in 2012-2013 by reducing non-pay expenditure and also by not recruiting to a number of vacant positions. In 2013 UCLH and PHE agreed to cover the costs of the deficit so that there would be a balanced budget for 2013-2014.

* Directors are employed directly by PHE since June 2012

OPERATIONS

This section reviews NaTHNaC's five key service areas, describing how they helped meet our core objectives for 2012-2013, and achieve the goal of "Protecting the Health of British Travellers".

Key Service Areas

1. Communication and information services
2. International health surveillance
3. Partnerships and collaborations
4. Telephone advice line service
5. Yellow fever vaccination programme

Core Objectives

1. Develop consistent and authoritative national guidance on general health matters for health professionals advising the public travelling abroad, and to disseminate this information widely.
2. Provide guidance on specific situations relating to the health of travellers.
3. Carry out surveillance of infectious and non-infectious hazards abroad, producing accessible regular outputs of such surveillance.
4. Administer the Yellow Fever Vaccination Centres (YFVCs).
5. Engage the major stakeholders concerned with travel health especially the travel industry, insurance industry and government bodies, to assist in sentinel surveillance and to engage in constructive dialogue towards a unified approach.
6. Facilitate, in collaboration with other training providers, the training of health care and other personnel in the provision of best quality travel health advice, based on such evidence as is available.
7. To define short-term and long-term research priorities in relation to travel medicine.

| KEY SERVICE AREA | ORGANISATIONAL ACHIEVEMENTS | CORE OBJECTIVE |
|--|---|---|
| <p>Communication and information services</p> <p>Website: Dynamic, evidence-based information for health professionals and travellers.</p> <p>National guidance</p> | <p>In 2012 - 2013 the NaTHNaC website received over 1 million visitors with over 4.5 million page views. Thirty-four Health Information Sheets were added/ revised, 27 News Items were posted and 99 Clinical Updates (CUs) were posted. The CUs described these global health events, how they might affect British travelers, and provided recommendations on how to mitigate those risks. The CUs received over 190,000 page views.</p> <p>NaTHNaC's Twitter page was established late 2009. In 2012-2013 we issued 555 tweets and now have over 750 followers. In February 2103, NaTHNaC's launched its Facebook and LinkedIn pages. We have been increasingly well "liked" since that time.</p> <p>NaTHNaC has worked with HPA Communications Team and released 6 press releases. Members of the senior team have also featured in several articles in the print media.</p> <p>NaTHNaC are members of, and contributed to guidance produced by, the travel sub-group of the Joint Committee on Vaccination and Immunisation (JCVI), and Advisory Committee on Malaria Prevention (ACMP).</p> | <p>1, 2, 3</p> <p>1,2,5</p> <p>1</p> <p>1,2</p> |
| <p>International health surveillance</p> <p>Identification and reporting of health events of importance to British travellers</p> | <p>In 2012-2013, information about 1764 global health events, assessed as being of importance to British travellers, was made publically available on the Outbreak Surveillance Database (OSD). The OSD directly received over 25,000 page views. Two hundred and forty-seven daily outbreak</p> | <p>1,2,3</p> |

| | | |
|---|--|---------------------------------------|
| | <p>summary reports were generated and subsequently used to inform 99 Clinical Updates.</p> <p>NaTHNaC assisted the HPA in the daily international surveillance of health events with relevance for the London 2012 Olympics and Paralympic Games.</p> <p>A review of worldwide epidemiology of specific diseases has been completed and will inform the revision of the country recommendations on the NaTHNaC website to be made during 2013. An external governance group of disease experts from PHE, Hospital for Tropical Diseases and London and Liverpool Schools of Tropical Medicine were invited to oversee this review.</p> <p>An internal review of the surveillance reporting systems, including audit and consultation with stakeholders, began in 2013. Areas for service improvements will be identified</p> | <p>1,3,5</p> <p>3,6</p> <p>1,5</p> |
| <p>Partnerships and collaborations</p> | <p>NaTHNaC fostered its relationship with other national and international travel health organisations including PHE, Health Protection Scotland, and US Centers for Disease Control and Prevention, Public Health Agency of Canada and World Health Organization.</p> <p>NaTHNaC entered into a new collaboration with MIMS to produce its 'Vaccination and malaria prophylaxis recommendations for travellers' as from October 2012.</p> <p>NaTHNaC strengthened its relationship with key stakeholders who also communicate with the British travelling public, in particular the Foreign and Commonwealth Office (FCO) and the Association of British Travel Agents (ABTA).</p> <p>NaTHNaC entered into a partnership with the Royal Society of Hygiene and Tropical Medicine to deliver a travel medicine study day in summer 2013.</p> | <p>1,7</p> <p>1</p> <p>5</p> <p>6</p> |

| | | |
|---|---|--|
| <p>Telephone advice line service</p> <p>Offering support to health professionals who are consulting with complex travellers.</p> | <p>In 2012-2013 NaTHNaC nurses answered 8647 calls on the national telephone advice line. Many calls could not be answered and a review of our call handling began in 2013 aiming to improve this. Over 87% of callers whose calls were answered were very satisfied with the advice they received; 95% rated the service as very valuable to their everyday practice.</p> | <p>1,2</p> |
| <p>Yellow fever vaccination programme</p> <p>Registration, clinical standards, training and audit.</p> | <p>In 2012-2013, 3695 Yellow Fever Vaccinations Centres (YFVCs) in England, Wales and Northern Ireland were registered by NaTHNaC; 220 of these were new centres.</p> <p>2286 YFVCs received training; 18 full-day face-to-face training days and 62 regional half-day update training days were held. The training received Royal College of Nursing accreditation.</p> <p>A record number of annual returns were completed online.</p> <p>Two YFVC newsletters were issued.</p> <p>NaTHNaC's e-learning project progressed throughout 2012-2013; YF training online content has been developed in-house and translated into interactive e-learning modules in collaboration with an educational team at UCLH. An e-learning platform, the 'Learning Zone', will be launched in late 2013.</p> <p>YFVC Code of Practice has been extensively reviewed, revised and agreed by the NaTHNaC Steering Committee. This will be launched with the e-learning project in late 2013.</p> | <p>1, 2, 4, 6</p> <p>2, 4, 6</p> <p>2, 4</p> <p>1,6</p> <p>4, 6</p> <p>4</p> |

Team Achievements for 2012 - 2013:

| | |
|-----------------------------------|--------------------------|
| Key: TC - Terence Corrigan | JM – John Matthewson |
| VF – Vanessa Field | DP – Dipti Patel |
| LF – Lisa Ford | GO – Geraldine Oliver |
| MG - Mary Gawthrop | HS – Hilary Simons |
| YI – Yetunde Ibitoye | AS – Alexandra Stillwell |
| DJ – Daiga Jermacane | CW – Claire Wong |

| A. Honours and Distinctions | |
|---|----------------------------------|
| Fellowship, Faculty of Travel Medicine, Royal College of Physicians and Surgeons (Glasgow). FFTMRCPS (Glasg) | LF MG HS AS CW |
| Fellowship of the Higher Education Academy | CW |
| B. Professional Activities | |
| <i>Faculty of Travel Medicine, Royal College of Physicians and Surgeons, Glasgow</i> Travel Medicine Faculty Board Member (to January 2013) Travel Medicine Faculty Board Member (to January 2013) Panel of Examiners for Diploma in Travel Medicine, 2012 | HS VF HS HS CW |
| <i>International Society of Travel Medicine (ISTM)</i> Member, Continuous Professional Development (CPD) Committee Member, Publications Committee Council Member, Nurse Professional Group Member, Examination Committee, International Society of Travel Medicine Member, Scientific Committee CISTM 13 (2011-13) | VF HS VF HS CW CW HS |
| <i>4th Northern European Conference on Travel Medicine. Dublin June 2012</i> Member, Scientific Committee | CW |
| <i>5th Northern European Conference on Travel Medicine. Bergen Norway June 2014</i> Member, Steering Committee Member, Scientific Committee | DP MG DP |
| <i>Department of Health, Joint Committee on Vaccination and Immunisation</i> Observer | VF DP |
| <i>HPA Advisory Committee on Malaria Prevention</i> Member | VF DP |
| <i>Liverpool School of Tropical Medicine</i> Internal Examiner, Diploma in Tropical Nursing | HS CW |

| | |
|---|----------------|
| Centre for Occupational and Environmental Health, Manchester University Honorary Lecturer | DP |
| World Health Organization Roster of Experts in Travel Medicine | VF |
| Travel Medicine and Infectious Diseases Editorial Board Member | VF |
| C. Publications | |
| Books | |
| Snashall DC, Patel D , eds. <i>ABC of Occupational and Environmental Medicine</i> , 3rd ed. Chichester: Wiley Blackwell, 2012 | DP |
| Book Chapters | |
| Patel D . Infections. In: Snashall DC, Patel D , eds. <i>ABC of Occupational and Environmental Medicine</i> , 3rd ed. Chichester: Wiley Blackwell, 2012. P68 -79 | DP |
| Smith DR, Leggat PA, Patel D . Travel. In: Snashall DC, Patel D , eds. <i>ABC of Occupational and Environmental Medicine</i> , 3rd ed. Chichester: Wiley Blackwell, 2012. p6122 – 128. | DP |
| Patel D . General Aspects of fitness to work overseas. In Palmer KT, Brown I, Hobson J, eds. <i>Fitness for Work - The Medical Aspects</i> , 5 th ed. Oxford: Oxford University Press, 2013. p671 - 676 | DP |
| Field V . Screening of the asymptomatic long-term traveler. In <i>Hunter's Tropical Medicine and Emerging Infectious Disease</i> , 9 th Edition. Elsevier 2012 | VF |
| Journal Publications | |
| Simons H, Wong CS, Stillwell A . Travel Health 1: travel risk assessment and risk management. <i>Nurs Times</i> 2012;108(20): 14-16 | HS CW AS |
| Wong CS, Simons H . Advising travellers who have special risks. <i>Nurs Times</i> . 2012;108(20):18-20 | CW HS |
| Gawthrop M, Stillwell A, Wong CS, Simons H . Preventing malaria in travellers: an overview. <i>Nurs Times</i> 22-28 May 2012;108(21): 23-25 | MG AS HS CW |
| Wong CS, Simons HJ . The prevention of typhoid in travellers. <i>Independent Nurse</i> [Internet]. September 2012. Available from: http://www.independentnurse.co.uk | CW HS |
| Gawthrop M, Stillwell A, Wong CS, Simons H . Preventing malaria in Travellers: an overview. <i>Nurs Times</i> 2012;108(21): 23-25 | MG AS CW HS |
| Wong C, Simons H . Health advice for older people travelling overseas. <i>Nurs Older People</i> . 2012;24(8): 14-9 | CW HS |
| Wong C, Simons H . Travel health advice for babies and young children. <i>Nursing in Practice</i> [Internet]. May/June 2012. Available from: http://www.nursinginpractice.com/issues/33053 | CW HS |
| Stillwell A . Scenarios from the NaTHNaC Telephone Advice Line. <i>British & Global Travel Health Association Journal XIX</i> 2012;19: 28-31 | AS |
| Stillwell A . Scenarios from the NaTHNaC Telephone Advice Line. <i>British & Global Travel Health Association Journal XX</i> 2012;20: 36-39 | AS |

| | |
|--|-------------------------|
| Chiodini JH, Anderson E, Driver C, Field VK , Flaherty GT, Grieve AM, et al Recommendations for the Practice of Travel Medicine. <i>Travel Med Infect Dis.</i> 2012;10(3): 109-28. | VF HS |
| Odolini S, Parola P, Gkrania-Klotsas E, Caumes E, Schlagenhauf P, López-Vélez R, et al. Travel-related imported infections in Europe, Euro TravNet 2009. <i>Clin Microbiol Infect</i> 2012;18(5): 468-74. | VF |
| Gautret P, Cramer J, Field V , Caumes E, Jensenius M, Gkrania-Klotsas E, et al; for the EuroTravNet Network. Infectious diseases among travellers and migrants in Europe, <i>Euro TravNet</i> 2010. <i>Euro Surveill.</i> 2012;8: 17(26). | VF |
| Other Publications | |
| Monograph: Chiodini J, Boyne L, Stillwell A , Grieve S. Travel health nursing: career and competence development, RCN guidance. RCN: London, 2012 | AS |
| D. Abstracts and Presentations | |
| Gawthrop M, Ford L, Matthewson J, Stillwell A, Simons H, Wong C. Free Communication: Analysis of clinical incidents reported to a national travel health service advice line. <i>4th Northern European Conference on Travel Medicine</i> , 5-8 June 2012, Dublin, Ireland. | MG LF JM AS HS CW |
| Simons H, Jermacane D, Ibitoye Y, Corrigan T, Wong C, Oliver G, Hill DR. Free Communication: Analysis of yellow fever vaccine use by Yellow Fever Vaccination Centres in England Wales and Northern Ireland. <i>4th Northern European Conference on Travel Medicine</i> , 5-8 June 2012, Dublin, Ireland. | HS DJ, YI TC, CW GO, |
| Grieve S, Chiodini J, Boyne L, Stillwell A. Free Communication; Nurses in Travel Health Medicine: a career and competency framework. RCN guidance. RCN London 2012. . <i>4th Northern European Conference on Travel Medicine</i> , 5- 8 June 2012, Dublin, Ireland. | AS |
| E. Invited Speaker Lectures | |
| Information sources in Travel Medicine. Short Course in Travel Medicine . London School of Hygiene and Tropical Medicine. London, 17 April 2012 | DP |
| Travel Health Basics: vaccine update. Cosham Health Centre. Cosham, 19 April, 2012 | HS |
| Travel Health. What's new? 9 th Welsh Immunisation Conference. Newport, 25 April 2012 | LF |
| Putting the theory into practice: vaccine issues in Travel Medicine. Faculty of Travel Medicine (RCPSG) Joint Symposium with Royal College of General Practitioners Glasgow, 26 April 2012 | HS |
| Update in Travel Medicine. International Association of Physicians for the Overseas Services. London, 11 May 2012 | DP |
| Rabies and Tetanus. Diploma in Tropical Nursing, Liverpool School of Tropical Medicine. Liverpool, 14 May 2012 | LF |
| Looking after number one. Diploma in Tropical Nursing, Liverpool School of Tropical Medicine. Liverpool, 14 May 2012 | HS CW |

| | |
|--|------------------------|
| Symposium presentation: Gold standard resources in travel medicine. Regional Conference of the ISTM. Singapore, 22 May 2012 | VF |
| An update on the work of the National Travel Health Network and Centre. GeoSentinel Annual meeting. Dublin, 5 June 2012 | VF |
| OSKE presentation: Medico-legal aspects. 4 th Northern European Conference on Travel Medicine. Dublin, 6 June 2012 | DP |
| OSKE presentation: Traveller Security. 4 th Northern European Conference on Travel Medicine. Dublin, 7 June 2012 | CW |
| OSKE presentation: The pregnant and breastfeeding traveller. 4 th Northern European Conference on Travel Medicine. Dublin, 7 June 2012 | HS |
| OSKE presentation. Medical Tourism. 4 th Northern European Conference on Travel Medicine. Dublin, 7 June 2012 | LF |
| The Complex Traveller. Diploma in Travel Medicine. Royal College of Physicians and Surgeons. Glasgow, September 2012 | VF DP |
| Panel Discussion: Should they stay or should they go? Joint symposium with the Faculty of travel medicine and Faculty of Travel Medicine (RCPSG FTM). London, 11 September 2012 | DP |
| UK Travel Medicine 2012. Travel Medicine in Olympic Year. Faculty of Travel Medicine Annual Symposium. Glasgow, 18 October 2012 | VF DP |
| Travel Health Update: vaccines. Cosham Health Centre. Cosham, 25 October 2012 | HS |
| Travel health – visiting friends and relatives. Health Protection Agency Migrant Health in the primary care setting, with a focus on infectious diseases. London, 12 November 2012 | CW |
| Hot topics in travel immunisation – yellow fever and typhoid vaccine. 23 rd National Immunisation Conference. Manchester, 7 December 2012 | CW |
| Travel vaccines and the diseases they prevent: Part 1. Travel Health and Expedition Medicine Course, Liverpool School of Tropical Medicine. Liverpool, 5 February 2013. | CW |
| The backpacker. Travel Health and Expedition Medicine Course, Liverpool School of Tropical Medicine. Liverpool, 6 February 2013 | HS |
| Travel vaccines. Diploma in Tropical Medicine and Hygiene, London School of Hygiene and Tropical Medicine. London, 13 February 2013 | DP |
| Travel Medicine in the UK: The Role of NaTHNaC. Seminar, Health Protection Agency. Porton Down, 21 February 2013 | DP |
| Standard setting in travel medicine (including yellow fever). Joint symposium of Royal Pharmaceutical Society and Faculty of Travel Medicine (RCPSG FTM). London, 12 March 2013 | DP |
| F. Education and Training | |
| <p>London School of Hygiene and Tropical Medicine</p> <ul style="list-style-type: none"> • Lecturer, Short Course in Travel Medicine • Lecturers, Diploma in Tropical Medicine and Hygiene | <p>DP</p> <p>VF DP</p> |

| | |
|--|-------------------------------|
| <p>Liverpool School of Tropical Medicine</p> <ul style="list-style-type: none"> • Lecturer, Diploma in Tropical Medicine • Lecturers, Diploma in Tropical Nursing • Course organiser and lecturer, Travel and Expedition Medicine | <p>LF LF HS CW LF</p> |
| <p>Faculty of Travel Medicine RCPSG</p> <ul style="list-style-type: none"> • Lecturers, Diploma in Travel Medicine, September 2012. | <p>VF DP</p> |
| <p>Manchester University</p> <ul style="list-style-type: none"> • Lecturer, Tutor, and Supervisor, MSc Occupational Medicine | <p>DP</p> |
| <p>Yellow Fever Vaccination Centre Training Seminars, England, Wales and Northern Ireland.</p> | <p>MG HS AS CW</p> |
| <p>Yellow Fever vaccination Centre Training Seminar, Boots, Ashby de la Zouch.</p> | <p>MG HS AS</p> |
| <p>Yellow Fever Centre Training Seminar. Superdrug, Crawley</p> | <p>MG HS</p> |

Operational highlights from 2012-2013



APRIL

The Health Protection Agency (HPA) and University College London Hospitals NHS Foundation Trust announce

the appointment of the new NaTHNaC Directors, Dr Vanessa Field and Dr Dipti Patel.

To coincide with World Malaria Day, NaTHNaC highlights the publication of the 2011 HPA report on malaria imported into the United Kingdom, and reminds travellers of the importance of seeking pre-travel medical advice and adhering to the ABCD of malaria prevention.

In preparation for the 2012 UEFA European Football Championship in Poland and Ukraine, NaTHNaC issues guidance for health professionals advising football fans.

April sees the launch of the *Self Assessment and Audit Tool* for yellow fever vaccination centres (YFVC), and NaTHNaC has the best ever response rate (95%) for YFVC annual returns.

Hilary Simons presents at the Joint Symposium of the Faculty Travel Medicine Royal College of Physicians and Surgeons (RCPS) (Glasgow) and the Royal College of General Practitioners (Scotland).

Lisa Ford presents at the Welsh Immunisation Conference in Newport.



MAY

Following the confirmation of a case of human rabies in a London resident who had returned from South Asia,

NaTHNaC reminds travellers and health

professionals on rabies prevention and the need for prompt medical assessment following any bite, scratch or lick by a warm blooded animal during travel to a rabies endemic country.

Vanessa Field presents at the Asia Pacific Travel Health Conference 2012 in Singapore.

May also sees the publication of the Faculty of Travel Medicine of the RCPS (Glasgow) *Recommendations for the practice of travel medicine*. Authors include Vanessa Field and Hilary Simons.



JUNE

Claire Wong is a member of the Scientific Committee of 4th Northern European Conference on Travel

Medicine (NECTM), in Dublin, Ireland.

Lisa Ford, Mary Gawthrop, Dipti Patel, Hilary Simons and Claire Wong present at NECTM on a variety of topics ranging from the pregnant and breastfeeding traveller to medical tourism.

Yetunde Ibetoye and Daiga Jermacane promote the work of NaTHNaC at NECTM.

Dipti Patel is interviewed for an article in the Sunday Times on malaria.



JULY

NaTHNaC works as part of the HPA's international team to provide enhanced international infectious

disease surveillance for the London 2012 Olympic and Paralympic Games.

In preparation for summer travel NaTHNaC reminds travellers to Europe of the risk of mosquito and tick-borne diseases.

NaTHNaC is mentioned in a Sunday Times article on how to avoid tropical diseases



AUGUST

Following the report of Hantavirus Pulmonary Syndrome in some visitors to Yosemite National Park, California, USA, NaTHNaC

issues travel advice on the potential risks and prevention measures.

NaTHNaC alerts travellers to Canada of an outbreak of Legionnaire's disease in Quebec.



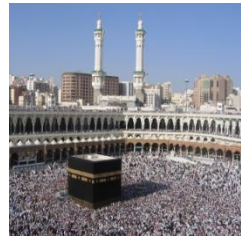
SEPTEMBER

NaTHNaC informs travel clinics of the limited supply of rabies vaccine in the UK.

NaTHNaC warns travellers about methanol poisoning associated with the consumption of counterfeit alcoholic drinks in the Czech Republic.

In September the Royal College of Nursing publish their new Competencies: *Travel health nursing: career and competence development*. Authors include Alexandra Stillwell.

Dipti Patel presents at a joint conference of the Faculty of Occupational Medicine and the Faculty of Travel Medicine RCPSG (Glasgow).



OCTOBER

NaTHNaC and HPA remind people travelling to Saudi Arabia for the annual Hajj pilgrimage to seek health advice before making the journey. Their advice includes an update on the novel coronavirus situation.

Following a voluntary recall in Typhim Vi® typhoid vaccine and an expected shortage of typhoid vaccine, NaTHNaC produces an FAQ on typhoid vaccine for healthcare professionals.

NaTHNaC and HPA advise travellers and health professionals of the risk of dengue fever in the Autonomous Region of Madeira following the first report of dengue fever in Madeira.

NaTHNaC and MIMS publish '*Vaccination and Malaria Prophylaxis Recommendations for Travellers*' travel charts.

Vanessa Field and Dipti Patel present at the Faculty of Travel Medicine (RCPSG) (Glasgow) Annual Symposium.



NOVEMBER

NaTHNaC celebrates its 10th Birthday.

NaTHNaC clarifies the Australian yellow fever certificate requirements for travellers arriving from countries with a risk of yellow fever.

Claire Wong presents at the HPA training event on Migrant Health in the Primary Care Setting. Yetunde Ibetoye and Geraldine Oliver represent NaTHNaC at the Migrant Health event.

John De Vial from ABTA joins NaTHNaC steering committee as an observer.



DECEMBER

NaTHNaC and HPA provide travellers with ten top tips for a safe winter holiday.

Following the update to the rabies chapter of *Immunisation against infectious disease: the green book*, NaTHNaC publishes guidance on the implications for clinical practice.

Claire Wong presents at the 23rd National Immunisation Conference in Manchester.

Dipti Patel is interviewed by the Sunday Times about the typhoid vaccine shortage in the UK.



JANUARY

NaTHNaC provides an update on yellow fever activity in Africa, and advises health

professionals on the changes to the World Health Organization yellow fever vaccination recommendation maps.

NaTHNaC also highlight two cases of East African trypanosomiasis reported in tourists to Tanzania and Zambia.

Yellow fever training and the YFVC annual return goes paperless.



FEBRUARY

NaTHNaC launches a facebook page. In this month, NaTHNaC achieves a million website visits.

NaTHNaC provides general guidance for travellers and health professionals on viral respiratory tract infections and international travel.

Claire left after over 10 years with NaTHNaC to pursue a career in travel medicine in New Zealand.



MARCH

NaTHNaC provides travellers with simple tips to stay healthy if travelling abroad for an Easter break.

NaTHNaC advises travel clinics about the transitional changes for Patient Group Direction authorisation in the new NHS organisational structures in England.

NaTHNaC changes the NaTHNaC advice line times following a review of the service and feedback from users.

March sees the launch of a NaTHNaC page on LinkedIn

Dipti Patel presents at a joint conference of the Royal Pharmaceutical Society and the Faculty of Travel Medicine RCPSG (Glasgow).

Dr Nick Beeching steps down as Chair of NaTHNaC Steering Committee after 10 years.

NaTHNaC thanks our partner organisations for their support, expertise and commitment to
'Protecting the Health of British Travellers'

Public Health England
www.gov.uk/phe

Department of Health
www.dh.gov.uk

Liverpool School of Tropical Medicine
www.liv.ac.uk/lstm

London School of Hygiene and Tropical Medicine
www.lshtm.ac.uk

The Hospital for Tropical Diseases
www.thehtd.org

University College London Hospital NHS Foundation Trust
www.uclh.nhs.uk

National Travel Health Network and Centre (NaTHNaC)
UCLH NHS Foundation Trust
5th floor
250 Euston Road
London NW1 2PG
www.nathnac.org



University College London Hospitals **NHS**
NHS Foundation Trust