



NaTHNaC

Annual Report 2017 – 2018

OVERVIEW	3
Chair and Director’s Statement	3
GOVERNANCE	4
NaTHNaC Technical Advisory Group (TAG)	4
NaTHNaC Senior Management Team (SMT)	5
NaTHNaC Team	5
FINANCIAL REVIEW	7
NaTHNaC Financial Report	8
OPERATIONS	9
Core Objectives	9
Key Service Areas	10
Team Achievements for 2017 - 2018	12

OVERVIEW

Statement from the Chair and Director

2017/18 has been an important year for NaTHNaC as we continue to promote the health of the British traveller. Since the last Annual Report, our website continues to attract more visitors with an increase in page views of over 70%, allowing us to continue to strengthen our engagement with travellers, health professionals, travel clinics and the travel industry.

We have made several changes to the website based on feedback from users, such as increasing the range of guidance available for travellers with special health needs. We have introduced 39 new style antimalarial recommendation maps using mapping software that provides more accurate information on physical features such as altitude and river deltas. Also popular have been our YouTube guides to navigating our website.

To enhance our regulation of Yellow Fever Vaccination Centres (YFVCs), we developed a closer working relationship with the Care Quality Commission, and formed a YFVC Designation Panel to help us with designation decisions regarding existing or prospective centres in special circumstances. The launch of the 'Yellow Fever Zone' on the website has also been a success and will be enhanced further over the next year to include a one-stop shop for yellow fever training and registration. We will continue to work with YFVCs to identify further ways of improving our offering to them.

We continue to monitor our advice line and have made further changes to its opening hours following feedback from our customers. This includes having additional staff available over lunch times during demand peaks. As a result of an electronic data capture system for our advice line calls, we are now analysing common queries, and making changes to our guidance to help answer frequently asked questions.

You can read more about our activities and achievements from page 10 onwards.

Everything NaTHNaC has achieved has only been possible through the dedication of the NaTHNaC team, and with their hard work, we have again had a healthy end of year financial statement. We thank them all for their commitment and remain grateful for the continuing support of our commissioners Public Health England (PHE), hosts University College London Hospitals (UCLH), and partners on NaTHNaC's Technical Advisory Group.

Plans for this coming year include another joint study day with the Royal College of Nursing following the success of the last one, provision of interactive antimalarial recommendation maps, hosting of webinars based on common queries to our advice line, and partnering with the travel industry to improve health messaging to British travellers to name but a few initiatives.

We remain determined to be outward-looking, engaged and entrepreneurial, and look forward to further developments in 2018/2019.

Rima Makarem

Chair



Director

GOVERNANCE

NaTHNaC was created by the Department of Health in 2002. We are now commissioned by the Public Health England (PHE) and work in partnership with our network founders:

- The Hospital for Tropical Diseases
- Liverpool School of Tropical Medicine
- London School of Hygiene and Tropical Medicine
- Public Health England
- University College London Hospitals (UCLH) NHS Foundation Trust

NaTHNaC's broad aim is to protect the health of the British traveller, and it does this by providing evidence-based advice, information, and training to health professionals, travellers, the travel industry, and to national government.

NaTHNaC Technical Advisory Group

The NaTHNaC Technical Advisory Group (TAG) was formed in April 2014, and has representation from each of the NaTHNaC partners plus PHE, UCLH NHS Foundation Trust and the Department of Health. NaTHNaC is grateful for the support of each member organisation.

Technical Advisory Group Members:

Dr Nick Beeching	Liverpool School of Tropical Medicine
Professor Ron Behrens	Hospital for Tropical Diseases
Dr Michael Brown	London School of Hygiene and Tropical Medicine
Dr Vanessa Field	NaTHNaC
Dr Vanya Gant	University College London Hospitals NHS Foundation Trust
Dr Ines Campos Matos	Public Health England, Travel and Migrant Health Section
Prof David Laloo	Liverpool School of Tropical Medicine
Dr Rima Makarem	Chair
Dr Ailsa Wright (ex officio)	Department of Health
Dr Dipti Patel	NaTHNaC
Professor Nick Phin	Public Health England
Ms Melanie Watts	University College London Hospitals NHS Foundation Trust
Mr John de Vial	ABTA (observer)

NaTHNaC Senior Management Team (SMT)

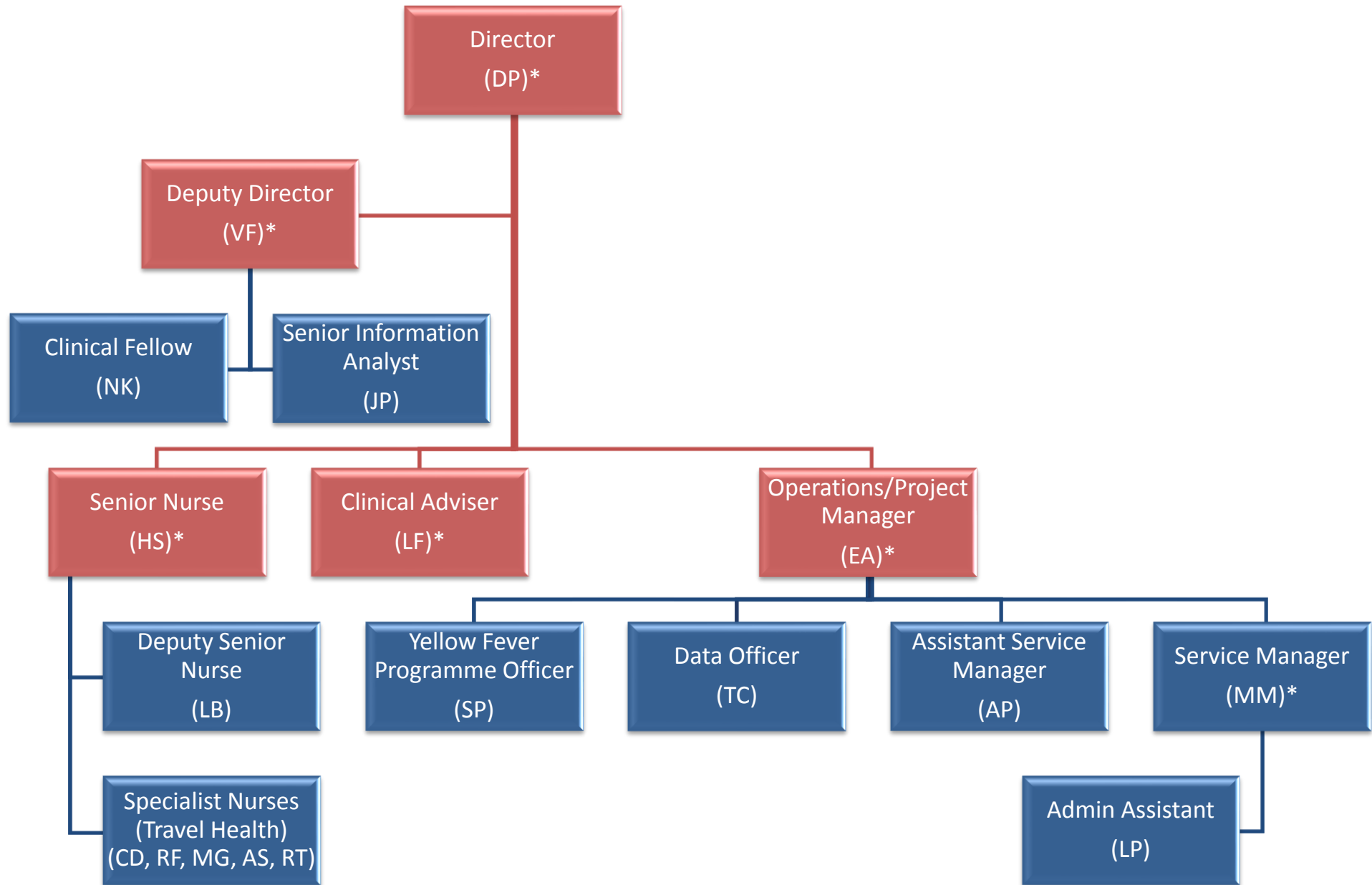
The current NaTHNaC SMT was established by the new directors in June 2012.

The NaTHNaC SMT consists of the Director, Deputy Director, Operations and Project Manager, Service Manager, Senior Nurse and Clinical Adviser. It is chaired by the Director and meets on a bi-monthly basis. The SMT is responsible for the strategic and operational management of NaTHNaC and implementing any policies and strategies as agreed by the Technical Advisory Group.

NaTHNaC Team

NaTHNaC's expertise is provided by 18 staff and has 2 office bases in London and Liverpool. Staff include: doctors, nurses, a Senior Information Analyst and administrators (see organogram on page 6). A business support staff review in 2017 resulted in a consultation at the end of August 2017. This resulted in the loss of the Yellow Fever Programme Officer role in January 2018.

Emily Aidoo (EA)	Operations and Project Manager
Lynda Bramham (LB)	Specialist Nurse Adviser, Sheffield
Terence Corrigan (TC)	Online Communications & Development/Data Officer, London
Carolyn Driver (CD)	Specialist Nurse Adviser, Manchester
Dr Vanessa Field (VF)	Deputy Director, London
Rachael Fletcher (RF)	Specialist Nurse Adviser, London (started November 2017)
Dr Lisa Ford (LF)	Clinical Adviser, Liverpool
Mary Gawthrop (MG)	Specialist Nurse Adviser, London
Dr Natasha Kay	Clinical Fellow (August 2017, maternity leave November 2017)
Masum Miah (MM)	Service Manager, London
Linda Pang (LP)	Administrative Assistant, London
Dr Dipti Patel (DP)	Director, London
Steven Payne (SP)	Yellow Fever Programme Officer (until January 2018)
Dr Jakob Petersen (JP)	Senior Information Analyst, London
Archana Purohit (AP)	Assistant Service Manager (until October 2017)
Hilary Simons (HS)	Senior Specialist Nurse, Liverpool
Alexandra Stillwell (AS)	Specialist Nurse Adviser, London
Rose Tucker (RT)	Specialist Nurse Adviser, Derbyshire



* Senior Management Team

FINANCIAL REVIEW

The financial statement covers the period from 1 April 2017 to 31 March 2018.

NaTHNaC receives operating funds from three sources:

1. Public Health England

PHE provides core funding for NaTHNaC on an annual basis, and commissions NaTHNaC to carry out its work, including its programme for Yellow Fever Vaccination Centres (YFVCs). NaTHNaC is hosted by the UCLH NHS Foundation Trust and its headquarters are at 250 Euston Road, London. All monies received from PHE are administered through the Trust, and all London-based NaTHNaC personnel (with the exception of the Directors) are employed by the Trust. The Directors are employees of PHE, and Liverpool staff are employees of Liverpool School of Tropical Medicine.

2. The yellow fever vaccination programme

Income from the yellow fever programme comprises both YFVC registration fees and training fees. Registration fees from YFVCs are assigned to the year of receipt and the subsequent year depending upon the period of registration of the individual centre (YFVCs have the option of registering for one or two years).

Yellow fever training programme fees are targeted to recover costs and may be carried over into subsequent years.

3. Other income

NaTHNaC has additional income streams including provision of data feeds. These contribute a small amount to the operating budget.

Expenditure is divided between the two sites where NaTHNaC operates: the UCLH NHS Foundation Trust in London and the Liverpool School of Tropical Medicine.

NaTHNaC Financial Report		2017/18	
INCOME		£	£
	Annual Funding (PHE)		266,960
	Registration Fees - released & collected		837,936
	Training Fees		193,835
	Other Income		25,259
	TOTAL INCOME		1,323,990
EXPENDITURE			
	Pay	UCLH	407,875
		LSTM	100,749
			508,624
	Training Costs		5,150
	Rent, Rates and Utilities		22,675
	General Expenditure		173,551
			201,376
	TOTAL EXPENDITURE		710,000
	OPERATING PROFIT / LOSS		613,990
	Prior Year PHE Contribution		0
	SURPLUS / (DEFICIT)		613,990
	Surplus Carried forward		(249,955)
	Registration Fees carried forward to future years		(364,035)
	Mat leave income to cover future costs		0
	Total Income carried forward		(613,990)

Notes/Assumptions

- *Registration fees carried forward related to cash received for registrations relating to future years*
- *Liverpool School of Tropical Medicine overheads are charged at 25% costs*
- *UCLH overheads are charged at 15% of PHE income plus partial accommodation costs.*

OPERATIONS

This section reviews NaTHNaC's five key service areas, describing how they helped meet our core objectives for 2017 - 2018, and achieve the broad aim of "Protecting the Health of British Travellers".

Key Service Areas

1. Communication and information services
2. International health surveillance
3. Partnerships and collaborations
4. Telephone advice line service
5. Yellow fever vaccination programme

Core Objectives

1. Develop consistent and authoritative national guidance on general health matters for health professionals advising the public travelling abroad, and to disseminate this information widely.
2. Provide guidance on specific situations relating to the health of travellers.
3. Carry out surveillance of infectious and non-infectious hazards abroad, producing accessible regular outputs of such surveillance.
4. Administer Yellow Fever Vaccination Centres (YFVCs) in England, Wales and Northern Ireland (EWNI).
5. Engage the major stakeholders concerned with travel health especially the travel industry, insurance industry and government bodies, to assist in sentinel surveillance and to engage in constructive dialogue towards a unified approach.
6. Facilitate, in collaboration with other training providers, the training of health care and other personnel in the provision of best quality travel health advice, based on such evidence as is available.
7. To define short-term and long-term research priorities in relation to travel medicine.

KEY SERVICE AREA	ORGANISATIONAL ACHIEVEMENTS	CORE OBJECTIVE
Communication and information services	<p>In the financial year 2017-18, the total number of page views to the TravelHealthPro website was 7,977,488 (an increase from 4,634,282 in 2016-17).</p> <p>Among the Top 10 most popular pages, were the country information pages for Thailand, India, Mexico, Vietnam, South Africa and Sri Lanka as well as factsheets on insect and tick bite avoidance and food and water hygiene.</p> <p>The range of topics covered on TravelHealthPro was expanded to include travelling with additional needs and/or disability, first aid kits, snake bites and avoidance, older and LGBT travellers, hand foot and mouth disease, measles, pertussis and plague.</p> <p>Website analytics were used to review seasonal trends in information seeking and also to review usage during the 2014 West African Ebola Virus outbreak and the 2015-2016 Zika virus outbreak.</p> <p>Online guides, E-learning and navigation tools were added, and webinars were introduced to expand NaTHNaC's educational offering.</p> <p>By May 2018, NaTHNaC had 2,916 Twitter followers (an increase of 11.7% compared to May 2017) and 1,487 followers on Facebook (an increase of 37.6% compared to May 2017).</p> <p>NaTHNaC are members of, and contributed to guidance produced by, the travel sub-group of the Joint Committee on Vaccination and Immunisation (JCVI), and Advisory Committee on Malaria Prevention (ACMP).</p>	1,2,3,5,7
International health surveillance	<p>A total of 586 outbreak notices were entered on NaTHNaC's outbreak surveillance database during 2017-18. Of these, 353 (60%) were updates to existing outbreak notices. The most commonly reported diseases were cholera, dengue, yellow fever, measles and Lassa Fever.</p> <p>NaTHNaC posted 75 news items which described global health events of importance to British travellers with recommendations as to how to mitigate those risks.</p>	1,2,3,5,7

Partnerships and collaborations	<p>NaTHNaC collaborated with the Public Health Forum of the Royal College of Nursing (RCN) to hold a study day “Travel Health Competence: pointing you in the right direction”.</p> <p>NaTHNaC continued to collaborate with ABTA to improve the travel health information available to its members.</p> <p>NaTHNaC continues to work closely with the Foreign and Commonwealth Office to improve information to the travelling public.</p> <p>NaTHNaC has also partnered with a travel insurance group to work on campaigns which provide travel health information alongside travel insurance information to British travellers.</p> <p>NaTHNaC currently license data to two commercial organisations.</p>	5,6
Telephone advice line service	<p>In the financial year 2017-18, NaTHNaC specialist nurses answered 5,353 calls on the national telephone advice line.</p> <p>The electronic data capture system of the advice line calls has been used to analyse real time data on concerns for health professionals advising travellers. This has included a review of calls relating to yellow fever certificate issues, rheumatological conditions, and seasonal trends in information seeking.</p>	2,6,7
Yellow fever vaccination programme	<p>NaTHNaC works with the Medicines and Healthcare products Regulatory Agency, Public Health England, vaccine manufacturers and distributors to ensure YFVC are kept well informed and supported regarding YF vaccine supplies. NaTHNaC monitors quality standards of YFVC and works closely with the various independent health care regulators in England, Wales and Northern Ireland.</p> <p>In 2017-18, a total of 3,239 YFVC were registered in England Wales and Northern Ireland, of which 273 were new centres.</p> <p>Nineteen classroom YF training days took place at two locations (Liverpool and London). In total, classroom YF training days attracted 501 health professionals. During 2017-18, a total of 1,280 completed the online YF training.</p> <p>There was an 86% response rate from YFVC to the online Annual Return of YF vaccine use.</p>	1,2,4

Team Achievements for 2016 - 2017:

Key:

LB	Lynda Bramham	MM	Masum Miah
VF	Vanessa Field	DP	Dipti Patel
RF	Rachael Fletcher	JP	Jakob Petersen
LF	Lisa Ford	HS	Hilary Simons
MG	Mary Gawthrop	AS	Alexandra Stillwell

A. Honours and Distinctions

Master of Science Health Care Management (with Distinction)	MM
---	----

B. Professional Activities

International	
EuroTravNet <i>Board Member</i>	VF
International Society of Travel Medicine (ISTM) <i>Member, Continuous Professional Development Committee</i> <i>Member, Nurse Professional Group Steering Council</i> <i>Member, Publications Committee</i> <i>Member Professional Education Committee</i> <i>Member, Travel for Work Committee</i> <i>Member, Digital Committee</i>	HS HS VF DP DP DP
7th Northern European Conference on Travel Medicine. Stockholm <i>Member, Steering Committee</i> <i>Assistant Chair, Scientific Committee</i> <i>Member, Nurse Sub-group</i>	DP DP LB
Travel Medicine and Infectious Diseases <i>Assistant Editor</i> <i>Editorial Board</i>	DP VF
World Health Organization <i>Roster of Experts in Travel Medicine</i>	VF DP

National	
Department of Health, Joint Committee on Vaccination and Immunisation <i>Observer</i> Travel Subcommittee <i>Member</i> <i>Secretariat</i>	DP VF DP LB
PHE Advisory Committee on Malaria Prevention <i>Member</i>	VF DP
Faculty of Travel Medicine <i>Co-opted Member</i>	LB
Federation of Infection Societies (FIS) Conference 2018 <i>Member, Scientific Committee</i>	DP
Royal College of Nursing Public Health Forum and NaTHNaC Conference 2017 - Travel Health Competence: Pointing you in the right direction <i>Joint Organiser</i>	VF
Society of Occupational Medicine, Travel Medicine Special Interest Group, <i>Chair</i>	DP
Centre for Occupational and Environmental Health, Manchester University <i>Honorary Lecturer</i>	DP
Occupational Medicine <i>Deputy Editor</i>	DP

C. Publications	
Book Chapters	
Smith K, Field VK. In Hunters Tropical Medicine and Emerging Infectious Disease, 10th edition. Elsevier: Canada; In press. Screening of the Asymptomatic Long-term Traveller.	VF
Journal Articles	
Petersen J, Simons H, Patel D. Access to yellow fever travel vaccination centres in England, Wales and Northern Ireland: a geographical study. Travel Med Infect Dis. 2017 Jul-Aug;18:24-29	DP JP HS

Petersen J, Simons H, Patel D, Freedman J. Early detection of perceived risk among users of a UK travel health website compared with internet search activity and media coverage during the 2015-2016 Zika virus outbreak: an observational study. <i>BMJ Open</i> . 2017 Aug 31;7(8)	DP JP HS
Patel D. The Hajj and Umrah: Health protection matters. <i>Travel Med Infect Dis</i> . 2017 Sep;19:1	DP
Simons H, Patel D. Atovaquone/proguanil (Maloff Protect) is now available without prescription in UK pharmacies. <i>Travel Med Infect Dis</i> . 2017 Nov - Dec;20:67	DP HS
Herman J, Patel D. Advising the traveller. <i>Medicine</i> 2018 Jan;46:1	DP
Other	
Chiodini PL, Patel D, Whitty CJM and Lalloo DG. Guidelines for malaria prevention in travellers from the United Kingdom, 2017. London: Public Health England; October 2017	DP
Campos-Matos I, Freedman J, Simons H. (2017) 'Malaria prevention in travellers 2017: Changes to the guidelines and implications for practice'. <i>Practice Nursing</i> 2017;28(11): 500-501	HS
Gawthrop M. Hepatitis A: What practice nurses need to know. <i>Practice Nursing</i> 2017;28(12)	MG
Field V, Gawthrop M. Travel health signposts - ABTA Destinations Magazine (Cuba and South America)	VF MG

D. Abstracts and Presentations

Grieve A, Chiodini J, Boyne L, Stillwell A. Travel Health Nursing: Guidance on Career and Competence Development, an Audit. Poster session presented at: CISTM15; 2017 14-18 May; Barcelona	AS
Petersen J, Simons H, Bramham L, Patel D. An Infodemiological Study of the Traffic to a National Travel Health Website Compared to Internet Search Activity During the 2014 West African Ebola Virus Outbreak. Poster session presented at: CISTM15; 2017 14-18 May; Barcelona	LB DP JP HS
Ive L, Petersen J, Simons H, Patel D. Do UK travel and tourism trends reflect pre-travel health advice service usage? Poster session presented at: Federation of Infection Societies Conference; 2017 30 Nov-2 Dec; Birmingham	DP JP HS

E. Lectures

The Vaccine Wall: WHO Recommendations on Lifelong Protection and ICVP. <i>CISTM15 Barcelona, May 2017</i>	DP
Travel Vaccines. <i>Diploma in Mountain Medicine Spring Theory Course, May 2017</i>	LB

Hajj and Umrah Travel – Health Protection Matters. <i>Field Epidemiology Service Training - South East and London, May 2017</i>	DP
Travel Health Competence: Pointing You In The Right Direction. Complex Travel Scenarios. <i>RCN and NaTHNaC Joint Conference June 2017</i>	LB
Travel Health Competence: Pointing You In The Right Direction. Malaria update. <i>RCN and NaTHNaC Joint Conference June 2017</i>	HS
Travel Health Competence: Pointing You In The Right Direction. Horizon 2018. <i>RCN and NaTHNaC Joint Conference June 2017</i>	DP
Travel Medicine Masterclass. <i>Society of Occupational Medicine, Bristol, June 2017</i>	DP
Assessment of Fitness to Travel and Work Abroad. <i>Diploma in Occupational Medicine Course. Canterbury, Sept 2017</i>	DP
Information Sources in Travel Medicine. <i>Short Course in Travel Medicine, London School of Hygiene and Tropical Medicine, Nov 2017</i>	DP
Medico-legal Aspects. <i>Short Course in Travel Medicine, London School of Hygiene and Tropical Medicine, Nov 2017</i>	DP
Preparing the Overseas Worker. <i>Short Course in Travel Medicine. London School of Hygiene and Tropical Medicine, Nov 2017</i>	DP
Mass Gatherings and Meningococcal Disease. <i>Meningitis Research Foundation's International Conference. London, Nov 2017</i>	DP
Tetanus and Rabies. <i>Diploma in Tropical Nursing. Liverpool School of Tropical Medicine, Dec 2017</i>	HS
Travel Vaccines: Scenarios and Tricky Cases. <i>PCN Expo. Business Design Centre London, Jan 2018</i>	LB
Introduction to Travel Health. Travel Vaccines and the Diseases They Prevent Part 1. <i>Liverpool School of Tropical Medicine, Feb 2018</i>	HS
Introduction to Travel Health. Travel Vaccines and the Diseases They Prevent Part 2. <i>Liverpool School of Tropical Medicine, Feb 2018</i>	HS
Introduction to Travel Health. Pregnant, Breast Feeding or Planning a Pregnancy <i>Liverpool School Of Tropical Medicine, Feb 2018</i>	LF
Travel Medicine Update. <i>Royal Hospital 1st International Conference (RIC 2018). Oman, Feb 2018</i>	DP
Emerging Diseases, Outbreaks and the Global Workforce. <i>Health Work And Wellbeing Conference. Birmingham, March 2018</i>	DP

Health Advice. Communicating FCO and Other Travel Advice to Customers. <i>ABTA Conferences. London, March 2018</i>	VF
NaTHNaC: Travel and Health Guidance. <i>Update On Strategies For WHO International Travel And Health. Bangkok, March 2018</i>	DP

F. Education and Training	
London School of Hygiene and Tropical Medicine <i>Lecturer, Short Course in Travel Medicine</i>	DP
Liverpool School of Tropical Medicine <i>Lecturer, Diploma in Tropical Nursing</i> <i>Lecturer, Introduction to Travel Medicine</i> Liverpool School of Tropical Medicine Online Course <i>Lecturer:</i> i. Travel Vaccination: Principles and Practice. <ul style="list-style-type: none"> • Risk Assessment: Vaccinations • Vaccine Preventable Diseases ii. Malaria Prevention in Travel Health. <ul style="list-style-type: none"> • The more complex traveller and malaria prevention. 	HS LF HS LF
Manchester University <i>Lecturer, Tutor, and Supervisor, MSc Occupational and Environmental Medicine</i>	DP
Royal Society of Tropical Medicine & Hygiene and Kent Institute of Medical Science <i>Lecturer, Diploma in Occupational Medicine</i>	DP
British Mountain Medicine Society <i>Lecturer, Diploma Mountain Medicine</i>	LB
NaTHNaC <i>Development, Risk Assessment Online Module</i> <i>Trainers, Yellow Fever Vaccination Centre Training Seminars, England, Wales and Northern Ireland</i>	LB, HS LB MG RF AS HS

NaTHNaC thanks our partner organisations for their support, expertise and commitment to 'Protecting the Health of British Travellers'

Department of Health and Social Care

www.gov.uk/government/organisations/department-of-health-and-social-care

Liverpool School of Tropical Medicine

www.lstmed.ac.uk

London School of Hygiene and Tropical Medicine

www.lshtm.ac.uk

Public Health England

www.gov.uk/government/organisations/public-health-england

The Hospital for Tropical Diseases

www.thehtd.org

University College London Hospital NHS Foundation Trust

www.uclh.nhs.uk

National Travel Health Network and Centre (NaTHNaC)

UCLH NHS Foundation Trust

3rd Floor Central

250 Euston Road

London NW1 2PG

www.nathnac.net



*NaTHNaC – Leading the Way in
Travel Health*