



NaTHNaC

Annual Report 2015 – 2016

OVERVIEW **3**

Chair and Director's Statement

GOVERNANCE **4**

NaTHNaC Technical Advisory Group (TAG)

NaTHNaC Senior Management Team (SMT)

NaTHNaC Team

FINANCIAL REVIEW **7**

NaTHNaC Financial Report

OPERATIONS **9**

Key Service Areas

Core Objectives

Team Achievements for 2015 - 2016

Operational Highlights from 2015 - 2016

OVERVIEW

Statement from the Chair and Director

2015-2016 was an exciting year for NaTHNaC. A new Chair, Dr Rima Makarem, was appointed; she brings NHS expertise from her decade-long experience as a non-executive director with various organisations. Rima also has strong commercial and strategic skills, which will be welcome as NaTHNaC considers future service development.

A major milestone was reached as NaTHNaC launched its new website, which has been well received and is frequently referenced by all our stakeholders. It is receiving increasing traffic, and a new Yellow Fever section is now being developed to support the needs of current and potential registered clinics. E-learning courses aimed at GP practices and nurses are planned for the coming year.

With the evolving Zika virus outbreak, 2015/16 was also a busy and challenging year. We worked tirelessly with the UK government, other public bodies and key international players to define travel advice for British travellers to affected areas.

Several other key initiatives have come to fruition this year, and you can read more about our activities and achievements from page 10 onwards.

Everything NaTHNaC has achieved has only been possible through the dedication of the NaTHNaC team, and with their hard work, we have again had a healthy end of year financial statement. We thank them all for their commitment, and remain grateful for the continuing support of our commissioners Public Health England (PHE), hosts University College London Hospitals (UCLH), and partners on NaTHNaC's Technical Advisory Group.

As before, there remains much more for NaTHNaC to do; the forthcoming year promises to be at least as busy as this last year, and we remain determined to develop our services further to meet the needs of our stakeholders.

Rima Makarem and Dipti Patel

GOVERNANCE

NaTHNaC was created by the Department of Health in 2002. We are now commissioned by the Public Health England (PHE) and work in partnership with our network founders:

- The Hospital for Tropical Diseases
- Liverpool School of Tropical Medicine
- London School of Hygiene and Tropical Medicine
- Public Health England
- University College London Hospital (UCLH) NHS Foundation Trust

NaTHNaC's broad aim is to protect the health of the British traveller, and it does this by providing evidence-based advice, information, and training to health professionals, travellers, the travel industry, and to national government.

NaTHNaC Technical Advisory Group

The NaTHNaC Technical Advisory Group (TAG) was formed in April 2014, and has representation from each of the NaTHNaC partners plus PHE, UCLH NHS Foundation Trust and the Department of Health. NaTHNaC is grateful for the support of each member organisation. A new chair, Dr Rima Makarem was appointed in April 2015.

Technical Advisory Group Members:

- Dr Nick Beeching Liverpool School of Tropical Medicine
- Dr Ron Behrens Hospital for Tropical Diseases
- Dr Michael Brown London School of Hygiene and Tropical Medicine
- Dr Vanessa Field NaTHNaC
- Dr Vanya Gant University College London Hospitals NHS Foundation Trust
- Dr Hilary Kirkbride Public Health England , Travel and Migrant Health Section
- Prof David Laloo Liverpool School of Tropical Medicine
- Dr Rima Makarem Chair
- Dr Ruth Parry (ex officio) Department of Health
- Dr Dipti Patel NaTHNaC
- Dr Nick Phin Public Health England
- Ms Melanie Watts University College London Hospitals NHS Foundation Trust
- Mr John de Vial ABTA (observer)

NaTHNaC Senior Management Team (SMT)

The current NaTHNaC SMT was established by the new directors in June 2012.

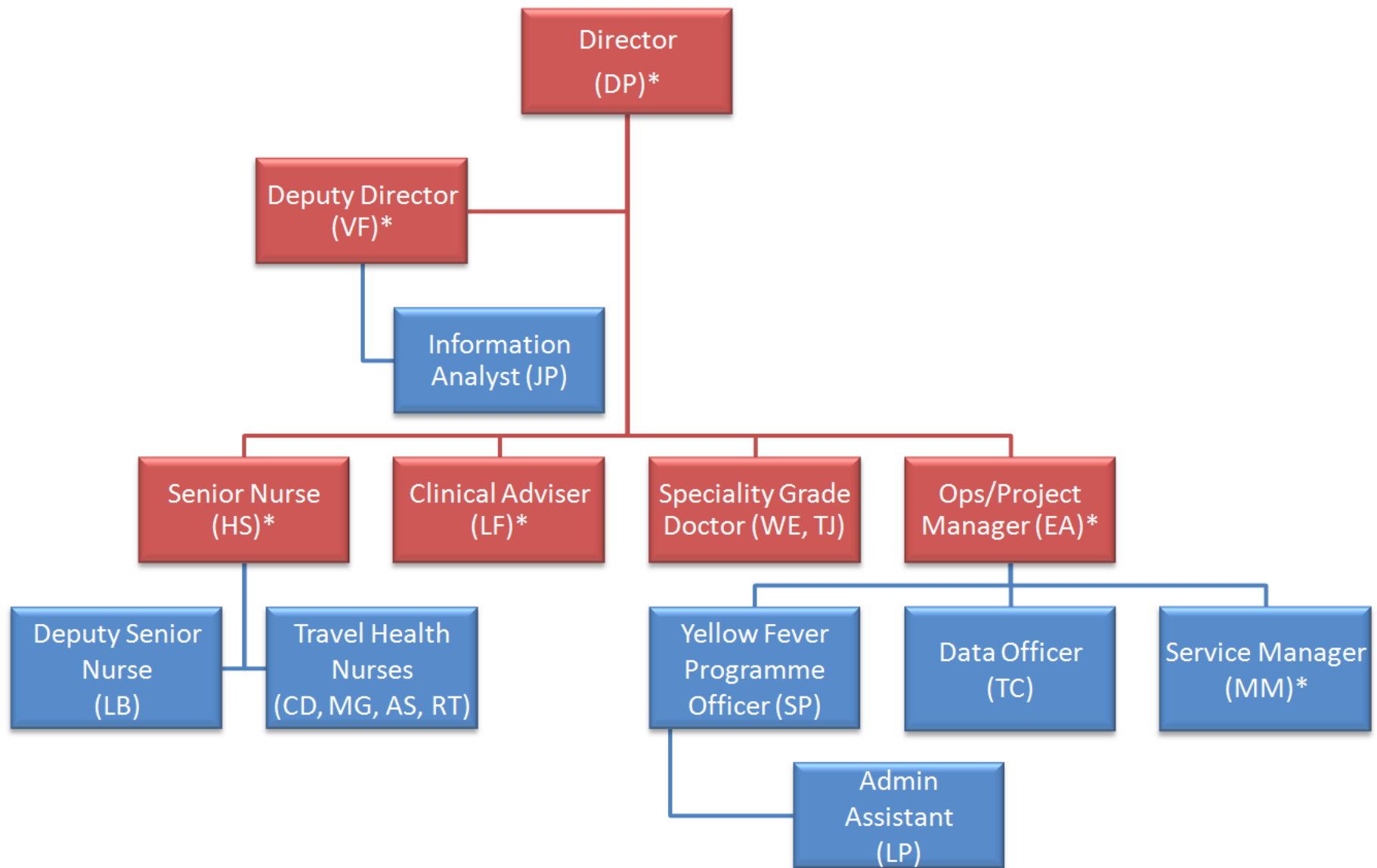
The NaTHNaC SMT consists of the director, deputy director, operations and project manager, service manager, senior nurse, and clinical adviser. It is chaired by the director and meets on a bi-monthly basis.

The SMT is responsible for the strategic and operational management of NaTHNaC and implementing any policies and strategies as agreed by the Technical Advisory Group.

NaTHNaC Team

NaTHNaC's expertise is provided by 17 staff based in London or Liverpool. They include doctors, nurses, an information analyst, and administrators (see organogram on page 7).

Emily Aidoo (EA)	Operations and Project Manager
Lynda Bramham (LB)	Specialist Nurse Adviser, Sheffield
Terence Corrigan (TC)	Online Communications and Development/Data Officer, London
Carolyn Driver (CD)	Specialist Nurse Adviser (Telephone Advice Line Service)
Dr Will Elson (WE)	Speciality Grade Doctor (until December 2015)
Dr Vanessa Field (VF)	Deputy Director, London (from November 2015)
Dr Lisa Ford (LF)	Clinical Adviser, Liverpool
Mary Gawthrop (MG)	Specialist Nurse Adviser, London
Yetunde Ibitoye (YI)	Yellow Fever Programme Administrator, London (until August 2015)
Daiga Jermacane (DJ)	Senior Information Analyst, London (until August 2015)
Dr Tania John (TJ)	Speciality Grade Doctor (until September 2015)
Masum Miah (MM)	Service Manager, London (from August 2015)
Linda Pang (LP)	Administrative Assistant, London
Dr Dipti Patel (DP)	Director, London
Steven Payne (SP)	Yellow Fever Programme Manager (from August 2015)
Dr Jakob Peterson	Senior Information Analyst, London (from January 2016)
Geraldine Oliver (GO)	Service Manager, London (until October 2015)
Hilary Simons (HS)	Senior Specialist Nurse, Liverpool
Alexandra Stillwell (AS)	Specialist Nurse Adviser, London
Rose Tucker (RT)	Specialist Nurse Adviser (Telephone Advice Line Service)



* Senior Management Team

FINANCIAL REVIEW

The financial statement covers the period from 1 April 2015 to 31 March 2016.

NaTHNaC receives operating funds from three sources:

- **Public Health England**

PHE provides core funding for NaTHNaC on an annual basis, and commissions NaTHNaC to carry out its work, including its programme for Yellow Fever Vaccination Centres (YFVCs). NaTHNaC is hosted by the UCLH NHS Foundation Trust and its headquarters are at 250 Euston Road, London. All monies received from PHE are administered through the Trust, and all London-based NaTHNaC personnel (with the exception of the Directors) are employed by the Trust. The Directors are employees of PHE, and Liverpool staff are employees of Liverpool School of Tropical Medicine.

- **The yellow fever vaccination programme**

This comprises both YFVC registration fees and training fees. Registration fees from YFVCs are assigned to the year of receipt and the subsequent year depending upon the period of registration of the individual centre (YFVCs have the option of registering for one or two years).

Yellow fever training programme fees are targeted to recover costs and may be carried over into subsequent years.

- **Other income**

NaTHNaC has additional income streams including provision of data feeds. These contribute a small amount to the operating budget.

Expenditure is divided between the two sites where NaTHNaC operates: the UCLH NHS Foundation Trust in London and the Liverpool School of Tropical Medicine.

NaTHNaC Financial Report				2015/16	
INCOME				£	£
		Annual Funding (PHE)		284,400	
		C/F Registration Fees - released		194,219	
		Registration Fees		547,319	
		Training Fees		174,085	
		Other Income		36,600	
		TOTAL INCOME			1,236,623
EXPENDITURE					
		Pay	UCLH	380,908	
			LSTM	91,541	
					472,449
		Training Costs		7,992	
		Rent, Rates and Utilities		21,380	
		General Expenditure		151,203	
					180,575
		TOTAL EXPENDITURE			653,024
		OPERATING PROFIT / LOSS			583,599
		Prior Year PHE Contribution		0	
		SURPLUS / (DEFICIT)			583,599
		Surplus Carried forward		(210,025)	
		Registration Fees carried forward to future years		(373,704)	
		Mat leave income to cover future costs		0	
		Total Income carried forward			(583,729)
		Bottom Line			(130)

Notes/Assumptions

- *Registration fees carried forward related to cash received for registrations relating to future years*
- *Liverpool School of Tropical Medicine overheads are charged at 25% costs*
- *UCLH overheads are charged at 10% PHE income*

OPERATIONS

This section reviews NaTHNaC's five key service areas, describing how they helped meet our core objectives for 2015 - 2016, and achieve the goal of "Protecting the Health of British Travellers".

Key Service Areas

1. Communication and information services
2. International health surveillance
3. Partnerships and collaborations
4. Telephone advice line service
5. Yellow fever vaccination programme

Core Objectives

1. Develop consistent and authoritative national guidance on general health matters for health professionals advising the public travelling abroad, and to disseminate this information widely.
2. Provide guidance on specific situations relating to the health of travellers.
3. Carry out surveillance of infectious and non-infectious hazards abroad, producing accessible regular outputs of such surveillance.
4. Administer the Yellow Fever Vaccination Centres (YFVCs).
5. Engage the major stakeholders concerned with travel health especially the travel industry, insurance industry and government bodies, to assist in sentinel surveillance and to engage in constructive dialogue towards a unified approach.
6. Facilitate, in collaboration with other training providers, the training of health care and other personnel in the provision of best quality travel health advice, based on such evidence as is available.
7. To define short-term and long-term research priorities in relation to travel medicine.

KEY SERVICE AREA	ORGANISATIONAL ACHIEVEMENTS	CORE OBJECTIVE
<p>Communication and information services</p> <p>Website: Dynamic, evidence-based information for health professionals and travellers</p> <p>Social media</p> <p>News items and press releases</p> <p>National guidance</p>	<p>On 24 August 2015 NaTHNaC launched TravelHealthPro, a new website providing news, factsheets, travel health advice by country, and outbreak surveillance information. The combined number of unique page views for the two websites (Nathnac.org prior to 24 August and TravelHealthPro.org.uk) was 4,441,463. Since launch to the end of March 2016, TravelHealthPro has had 2,127,450 unique page views. The Country Information section had the most page views. Thailand, India and Mexico remain the country pages most frequently visited.</p> <p>Over 50 news items were posted on TravelHealthPro since its launch. The most popular item was on the topic of Zika virus and pregnancy. This item had been opened at least once during more than 70,000 sessions between 26 January and 31 March 2016.</p> <p>A total of 384 tweets were posted on the NaTHNaC Twitter account, @NaTHNaC, during 2015-2016. By May 2016 NaTHNaC had 2,316 followers (an increase of 24% on 2014 - 2015). In 2015 - 2016 NaTHNaC's Facebook page achieved 249 likes with 43 posts added. In February 2016, NaTHNaC posted its first YouTube 'webinar' <i>International Certificate of Vaccination or Prophylaxis for Yellow Fever: a Practical Guide</i>. By end of April 2016 the webinar had 1,059 views.</p> <p>Seven news stories and press releases were produced with PHE.</p> <p>NaTHNaC are members of, and contributed to guidance produced by, the travel sub-group of the Joint Committee on Vaccination and Immunisation (JCVI), and Advisory Committee on Malaria Prevention (ACMP).</p>	<p>1, 2, 3</p> <p>1,2,3</p> <p>1, 2</p> <p>1,2,5</p> <p>1</p>

<p>International health surveillance</p> <p>Identification and reporting of health events of importance to British travellers</p>	<p>During 2015-2016, NaTHNaC reported on 740 global health events assessed as being of importance to British travellers on our publically available Outbreak Surveillance Database (OSD).</p> <p>During 2015-2016, a review of the worldwide epidemiology of four diseases was initiated with one review completed in consultation with disease experts from PHE and country specific recommendations updated.</p> <p>Since the outbreak of Zika in the Americas and other areas, NaTHNaC have posted over 50 Zika related outbreaks on the OSD and introduced Zika related recommendations for travellers on the TravelHealthPro website Country Information Pages.</p>	<p>1, 2, 3</p> <p>1, 3, 5</p> <p>1, 2, 3</p>
<p>Partnerships and collaborations</p>	<p>NaTHNaC has continued its relationships with other national and international public and travel health organisations including Public Health England, Health Protection Scotland, US Centers for Disease Control and Prevention, European Centre for Disease Prevention and Control, Public Health Agency of Canada, and World Health Organization.</p> <p>NaTHNaC continues to work with key stakeholders who also communicate with the British travelling public, in particular the Foreign and Commonwealth Office (FCO) and the Association of British Travel Agents (ABTA). In 2015-2016 NaTHNaC also collaborated with the Association of British Insurers in producing guidance on travel insurance.</p> <p>NaTHNaC has continued its collaboration with MIMS to produce its 'Vaccination and malaria prophylaxis recommendations for travellers'.</p> <p>NaTHNaC has ongoing agreements with DXS International PLC and the Collinsons Group to provide data from the TravelHealthPro website in order for them to create travel documents.</p>	<p>1,7</p> <p>1</p> <p>6</p> <p>5</p>

	<p>NaTHNaC is in discussions with other commercial organisations to provide automatic data feeds from the TravelHealthPro website to their sites.</p> <p>NaTHNaC continues to have articles featured in the scientific and lay press.</p>	1
<p>Telephone advice line service</p> <p>Offering support to health professionals who are consulting with complex travellers.</p>	<p>From 1 April 2015 to 31 March 2016, NaTHNaC Specialist Nurse Advisers answered 6613 calls on the national telephone advice line.</p> <p>Two separate reviews of queries: one relating to travellers with immune compromise, and one to travellers who are pregnant, preconception or breastfeeding were completed during this year. These have helped inform guidance provided on TravelHealthPro.</p> <p>An electronic consultation record facility for NaTHNaC nurses was introduced in January 2016 to facilitate the call handling service.</p>	<p>1,2</p> <p>1, 2, 7</p> <p>1, 2</p>
<p>Yellow fever vaccination programme</p> <p>Registration, clinical standards, training and audit.</p>	<p>In 2015-2016, 3,504 Yellow Fever Vaccination Centres (YFVCs) in England, Wales and Northern Ireland were registered by NaTHNaC; the majority (2,486) were operating in the General Practice setting. A total of 277 new centres registered. During 2015-16, NaTHNaC facilitated 16 classroom training days attracting a total of 375 delegates. Most delegates attended training in London, or Liverpool (283); six bespoke training sessions attracted a total of 92 delegates. In addition, 1,225 delegates successfully completed the yellow fever e-learning course.</p> <p>There were 2,852 annual returns made by 3,534 centres (80.7%).</p>	<p>1, 2, 4, 6</p> <p>2, 4, 6</p>

Team Achievements for 2015 - 2016:

Key: LB - Lynda Bramham DJ - Daiga Jermacane
 WE – Will Elson TJ – Tania John
 VF - Vanessa Field DP – Dipti Patel
 LF - Lisa Ford HS - Hilary Simons
 MG - Mary Gawthrop AS - Alexandra Stillwell

A. Professional Activities	
<i>International Society of Travel Medicine (ISTM)</i> Member, Continuous Professional Development (CPD) Committee Member, Publications Committee Member Professional Education Committee Council Member, Nurse Professional Group Conference of the International Society of Travel Medicine CISTM15, Member, Scientific Program Committee	VF HS VF DP HS DP
<i>6th Northern European Conference on Travel Medicine. London</i> Member, Steering Committee Member, Local Organising Committee Chair, Scientific Committee Member, Scientific Committee	DP DP DP HS
<i>Department of Health, Joint Committee on Vaccination and Immunisation</i> Observer Department of Health, Joint Committee on Vaccination and Immunisation Travel Subcommittee, Member	DP VF DP
<i>PHE Advisory Committee on Malaria Prevention</i> Member	VF DP
<i>Centre for Occupational and Environmental Health, Manchester University</i> Honorary Lecturer	DP
<i>Federation of Infection Societies (FIS) Annual Conference and the 10th Healthcare Infection Society (HIS) International Conference 2016.</i> Member, Scientific Committee	DP
<i>World Health Organization</i> Roster of Experts in Travel Medicine	VF
<i>Occupational Medicine</i> <i>Deputy Editor</i>	DP
<i>Faculty of Travel Medicine Education Board member</i>	LF
<i>Examiner for MFTM OSCE exams RCPS (Glas) 2nd Dec 2015</i>	LB

B. Publications	
Journal Publications	
Simons H, Patel D. Polio in Pakistan - A public health event of international concern with implications for travellers' vaccination. <i>Travel Med Infect Dis.</i> 2015;13(5):357-9	DP, HS
Dunn R, Kemp V, Patel D, Williams R, Greenberg N. Deployment guidelines for diplomats: current policy and practice. <i>Occup Med</i> 2015 Oct;65(7):535-41	DP
Allen J, Patel D. Enquiries to the United Kingdom National Travel Advice Line by healthcare professionals regarding immunocompromised travellers. <i>J Travel Med.</i> 2016 Mar 28;23(3)	DP
Other Publications	
Gawthrop M. Updated Public Health England malaria guidelines: What's new? <i>Practice Nursing</i> 2016, Vol 27, No 3. March 2016.	MG
Gawthrop M. Educating travellers on insect bite avoidance. <i>Practice Nursing</i> 2015, Vol 26, No 10. September, 2015.	MG
Gawthrop M. Yellow fever: Understanding vaccinations. <i>Practice Nursing</i> 2015, Vol 26, No 9. August, 2015	MG
A Rogers, L Ford MIMS Learning, March 2016. <i>Clinical Review Malaria</i>	LF
Chiodini PL, Patel D, Whitty CJM and Lalloo DG. Guidelines for malaria prevention in travellers from the United Kingdom, 2015. London: Public Health England; September 2015.	DP
Abstracts	
Allen J, Patel D. Enquiries to the National Travel Advice Helpline by healthcare professionals regarding travellers with immunocompromise. <i>CISTM 14 Quebec Canada</i> 24-28 May 2016 May 2015	DP
C. Invited Speaker Lectures	
Travel Medicine Update. Public Health Wales – 12th Welsh National Immunisation Conference. Cardiff 16 April 2015	DP
Primary Care and Public Health 2015, NEC Birmingham 'What's New in Travel Medicine?' 20 May 2015	LB
Preparing for challenging environments. Conference of the International Society of Travel Medicine (CISTM14). Quebec, Canada 24-28 May 2015	DP
Long-term conditions and the traveller. Joint FTM/MASTA conference: 'Why Travel Health Matters'. Glasgow, 26 June 2015	DP
Assessment of Fitness to Travel and Work Abroad. Diploma in Occupational Medicine Course, Canterbury 14th September 2015	DP
Travel Health Day. Intana Assist. Collinson Group. Haywards Heath. 7 October 2015	MG, HS
Medico-legal aspects. Short Course in Travel Medicine, London School of Hygiene and Tropical Medicine, London. 10 November 2015	DP
Information sources in Travel Medicine. Short Course in Travel Medicine, London School of Hygiene and Tropical Medicine, London. 11 November 2015	DP

Infectious diseases – The Risks. Outbreaks and Travel Alerts – what’s out there? ITIC Global Athens, Greece November 22015	DP
Polio vaccination in travellers. 26 th National immunisation conference 2015. Manchester December 4 2015	DP
Travel Health - Yellow fever vaccination: changes to recommendations and requirements under International Health Regulations. 26th National Immunisation Conference for Health Care Workers. Manchester Conference Centre. 4 December 2015	HS
Travel Health – Practical Issues - FAQ. 26th National Immunisation Conference for Health Care Workers. Manchester Conference Centre. 4 December 2015	HS, CD
Travel Vaccines and the Diseases they Prevent, Travel Health and Expedition Medicine Course, Liverpool School of Tropical Medicine, 9 February 2016.	HS
The backpacker. Travel Health and Expedition Medicine Course, Liverpool School of Tropical Medicine, 10 February 2016.	HS
Update on Malaria. Health work and wellbeing conference. Birmingham 9 March 2016	DP
TravelHealthPro (The new website from NaTHNaC) Top ten vaccine topics asked. Oxford Vaccine Group Oxford March 17 2016	DP
D. Education and Training	
London School of Hygiene and Tropical Medicine <ul style="list-style-type: none"> Lecturer, Short Course in Travel Medicine 	DP
Liverpool School of Tropical Medicine <ul style="list-style-type: none"> Lecturers, Diploma in Tropical Nursing Lecturer, Diploma in Tropical Medicine and Hygiene Lecturer, Travel and Expedition Medicine Course organiser and lecturer, Travel and Expedition Medicine 	LF, HS LF HS LF
Manchester University <ul style="list-style-type: none"> Lecturer, Tutor, and Supervisor, MSc Occupational Medicine 	DP
Royal Society of Tropical Medicine & Hygiene and Kent Institute of Medical Science, Lecturer, Diploma in Occupational Medicine	DP
Yellow Fever Vaccination Centre Training Seminars, England, Wales and Northern Ireland	LB, MG HS AS
E. New Initiatives	
NaTHNaC Yellow Fever certificate instructions 2016. Getting to grips with – the International Certificate of Vaccination or Prophylaxis: a practical guide	HS, LB

Operational Highlights from 2015 - 2016



APRIL

Dr Rima Makarem is appointed as NaTHNaC Chair. NaTHNaC produces guidance for travellers living with HIV, details of reported yellow fever cases in Peru and Brazil, information on contaminated bottled water in Pakistan, and BCG vaccine supply problems.

Dipti Patel is a speaker at the Public Health Wales 12th Welsh National Immunisation Conference in Cardiff.

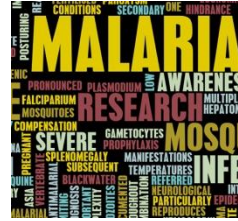


MAY

NaTHNaC reports on the first cases of Zika virus in Brazil.

May also sees NaTHNaC provide guidance on measles and travel, the World Health Organization (WHO) temporary recommendations for the prevention of international spread of poliovirus, outbreaks of meningococcal meningitis in Niger, hand foot and mouth disease in Japan, and a case of imported canine rabies in France.

Lynda Bramham is a speaker at the Primary Care and Public Health Conference at the NEC in Birmingham, and Dipti Patel is a speaker at the Conference of the International Society of Travel Medicine in Quebec, Canada.



JUNE

NaTHNaC highlights the publication of the 2014 PHE report on malaria imported into the United Kingdom, and reminds travellers of the importance of seeking pre-travel advice and adhering to the ABCD of malaria prevention.

Following new recommendations from the WHO, NaTHNaC updates its country yellow fever vaccination recommendations and requirements.

NaTHNaC and PHE remind people travelling to Saudi Arabia for the Hajj pilgrimage to seek health advice prior to their journey.

Steven Payne joins NaTHNaC as the new Yellow Fever Programme Officer. Dipti Patel is a speaker at the Joint Faculty of Travel Medicine/MASTA Conference.



JULY

NaTHNaC provides an update on chikungunya in the Caribbean, the Americas and Oceania.

July also sees a revision of NaTHNaC's hepatitis A vaccine recommendations following a review of worldwide epidemiology with PHE.

NaTHNaC reports on the recurrence of Ebola Virus disease in Liberia, and provides a reminder of the PHE Ebola returning workers scheme.



AUGUST

August sees NaTHNaC launch their new website TravelHealthPro.

August also sees NaTHNaC report on a cluster of cases of Cyclospora infection in travellers who had returned from Mexico, a case of human plague in a child who had visited the Stanislaus National Forest in Yosemite National Park, an outbreak of Legionnaires' disease in the South Bronx, New York City, and cases of meningococcal meningitis in scouts who had attended the World Scout Jamboree in Japan.

Masum Miah joins the NaTHNaC team as Service Manager.



SEPTEMBER

NaTHNaC highlights the publication of PHE's Advisory Committee on Malaria Prevention

updated guidelines on malaria prevention in travellers.

PHE and NaTHNaC remind pilgrims of health and travel risks associated with the Hajj and Umra, and also highlight the risk of MERS Co-V infection. NaTHNaC issues further updates on the constraints on the global supply of BCG vaccine.

Dr Vanessa Field returns from maternity leave, in the new role of Deputy Director of NaTHNaC.



OCTOBER

NaTHNaC issues advice for travellers on the latest guidance on the WHO temporary

recommendations to prevent the international spread of wild poliovirus

October also sees NaTHNaC report on the first locally acquired human case of West Nile virus in France since 2003.

October also sees the publication of a comprehensive review of the functions of the new TravelHealthPro website.



NOVEMBER

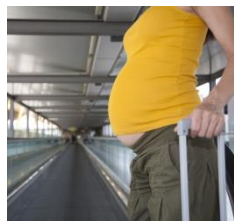
NaTHNaC hosts a travel medicine session at the Federation of Infection Societies Conference in

Glasgow.

NaTHNaC and the Association of British Insurers publish guidance on travel insurance for health professionals, and NaTHNaC and PHE provide health advice to UK residents planning to celebrate Diwali abroad. NaTHNaC also highlights the publication of the annual PHE dengue report.

NaTHNaC reports on a number of important travel related outbreaks including the first cluster of locally acquired dengue in Hawaii since 2011, an outbreak of dengue in Egypt, and on the international spread of Zika in the Americas.

Lisa Ford chairs the travel medicine session at the Federation of Infection Societies Conference.



DECEMBER

NaTHNaC reports on the spread of Zika in the Americas and the investigation into the

associated increase in congenital anomalies and Guillain-Barré syndrome.

NaTHNaC highlights the publication of the PHE 2014 report of enteric fever in England, Wales and Northern Ireland. NaTHNaC also reports on a small cluster of hepatitis A infections in UK travellers who had returned from the island of Rhodes in Greece, an outbreak of circulating vaccine derived polio virus in Myanmar, and provides an update on the WHO recommendations to prevent the international spread of wild poliovirus

Hilary Simons, Carolyn Driver and Dipti Patel present at the 26th National immunisation conference in Manchester.



JANUARY

With PHE, NaTHNaC advises pregnant travellers to consider avoiding travel to areas

with active transmission of Zika virus. NaTHNaC produces a number of resources for health professionals and travellers on Zika virus.

NaTHNaC alerts travellers to the risk of insect and tick borne disease in Europe, and advises on yellow fever in Peru, listeriosis in USA and Canada,

Jakob Petersen joins NaTHNaC as senior information analyst.



FEBRUARY

With the help of Liverpool School of Tropical Medicine NaTHNaC produces a webinar on

Getting to grips with the yellow fever certificate.

NaTHNaC reports on the WHO's declaration of a Public Health Emergency of International Concern due to the cluster of microcephaly cases and observed increase in neurological disorders and neonatal malformations associated with Zika virus reported in Brazil.

NaTHNaC and PHE produce a fact sheet for travellers planning to travel to celebrate the Chinese New Year.

Hilary Simons and Lisa Ford present on the Travel Health and Expedition Medicine Course, Liverpool School of Tropical Medicine.



MARCH

NaTHNaC reviews their polio country recommendations following the latest

update on the WHO temporary recommendations to prevent the international spread of polio.

NaTHNaC also highlight the ongoing Yellow fever outbreak in Angola and imported cases reported in China, the Democratic Republic of Congo and Kenya.

Following increasing evidence with PHE NaTHNaC strengthen their advice for pregnant women considering travel to areas of active Zika transmission.

Dipti Patel presents at Health and Wellbeing at Work 2016 Conference in Birmingham.

NaTHNaC thanks our partner organisations for their support, expertise and commitment to
'Protecting the Health of British Travellers'

Department of Health
www.dh.gov.uk

Liverpool School of Tropical Medicine
www.liv.ac.uk/lstm

London School of Hygiene and Tropical Medicine
www.lshtm.ac.uk

Public Health England
<https://www.gov.uk/government/organisations/public-health-england>

The Hospital for Tropical Diseases
www.thehtd.org

University College London Hospital NHS Foundation Trust
www.uclh.nhs.uk

National Travel Health Network and Centre (NaTHNaC)
UCLH NHS Foundation Trust
3rd Floor Central
250 Euston Road
London NW1 2PG
www.nathnac.org



University College London Hospitals **NHS**
NHS Foundation Trust

*NaTHNaC – Leading the Way in
Travel Health*